

HoldenCopley

PREPARE TO BE MOVED

Osborne Avenue, Sherwood, Nottinghamshire NG5 2HJ

£725 PCM

Osborne Avenue, Sherwood, Nottinghamshire NG5 2HJ



STUNNING DUPLEX APARTMENT...

This two double bedroom duplex apartment received an extensive refurbishment in early 2018 and is a perfect blend of modern style and period features.

The property is situated on a highly regarded tree lined location in the ever popular area of Sherwood.

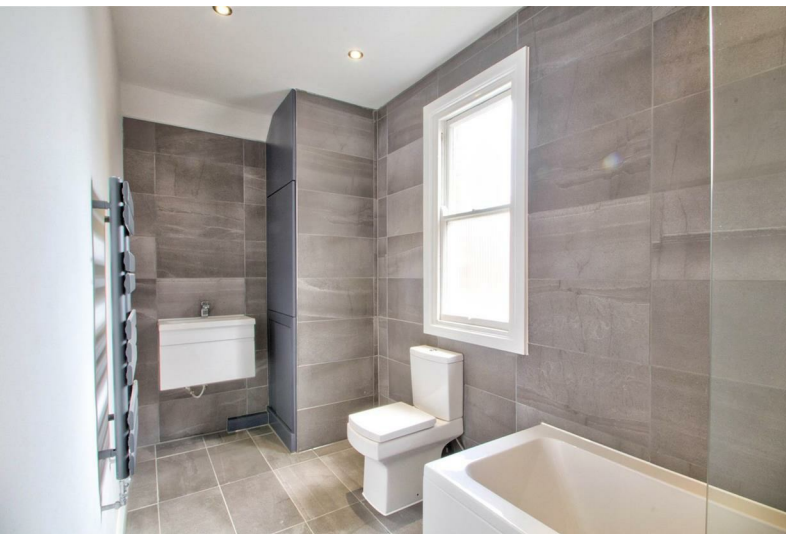
The lower level of the apartment has a beautiful lounge with an original exposed brick feature fireplace, a modern kitchen including integrated appliances, a double bedroom and also a newly fitted modern bathroom suite.

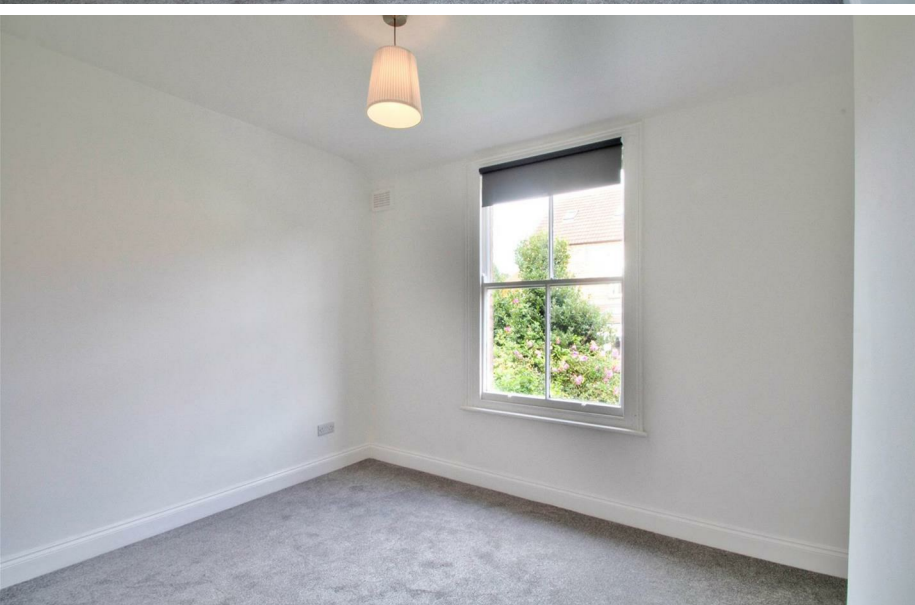
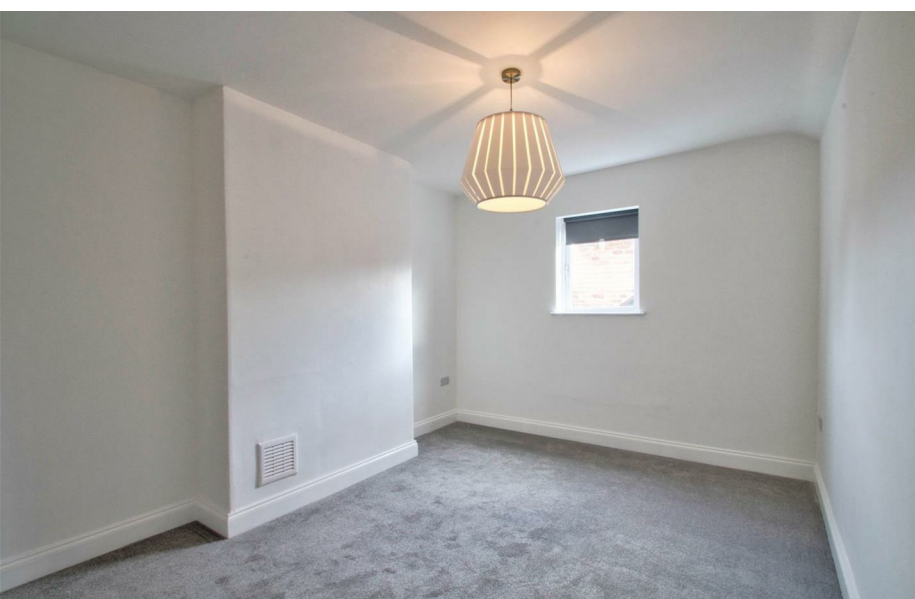
The upper level has another double bedroom.

SOUGHT AFTER LOCATION

AVAILABLE OCTOBER.

* 360 DEGREE VIRTUAL TOUR *





- Period Conversion
- Duplex Apartment
- Two Double Bedrooms
- Modern Fitted Kitchen
- Modern Bathroom
- Plenty Of Original Features
- Tree Lined Location
- Great First Home
- Exceptionally Well Presented
- Available October





ACCOMMODATION

First Floor:

Hallway

The hall has laminated flooring, a radiator and provides access to the accommodation

Lounge

17'4" x 13'5" (5.30 x 4.10)

The living room has a box bay window, feature fireplace, a radiator and laminated flooring

Kitchen

11'9" x 9'2" (3.60 x 2.80)

The kitchen has a range of base and wall units, a stainless steel sink with drainer and mixer taps, an integrated oven, hob, extractor fan, space for a fridge freezer, laminated flooring and a window

Bedroom Two

11'5" x 10'5" (3.50 x 3.20)

The bedroom has a radiator and a sash window

Bathroom

14'5" x 6'2" (4.40 x 1.90)

The bathroom has a 'P' shaped bath with mans fed shower over, a low level flush WC, hand basin, tiled walls, tiled flooring, a feature radiator, a double glazed window, recessed spotlights and a sash window

Second Floor:

Master Bedroom

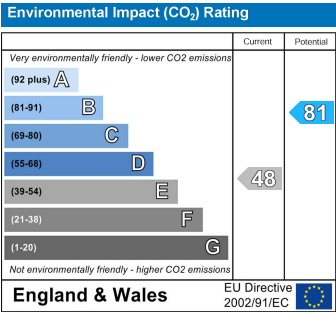
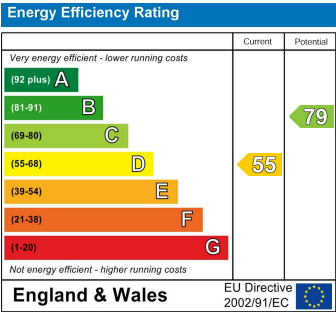
14'5" x 10'5" (4.40 x 3.20)

This bedroom has a double glazed window and a radiator

Outside:

Front

To the front of the property there is a communal garden



Osborne Avenue, Sherwood, Nottinghamshire NG5 2HJ

2



0115 8969 800

26 High Street, Arnold, Nottinghamshire, NG5 7DZ

sales@holdencopley.co.uk

www.holdencopley.co.uk

Agents Disclaimer: HoldenCopley, their clients and employees I: Are not authorised to make or give any representations or warranties in relation to the property either here or elsewhere, either on their own behalf or on behalf of their client or otherwise. They assume no responsibility for any statement that may be made in these particulars. These particulars do not form part of any offer or contract and must not be relied upon as statements or representations of fact. 2: Any areas, measurements or distances are approximate. The text, photographs and plans are for guidance only and are not necessarily comprehensive. It should not be assumed that the property has all necessary planning, building regulation or other consents and HoldenCopley have not tested any services, equipment or facilities. Purchasers must make further investigations and inspections before entering into any agreement.